



2021 Accessibility Audit - Final Report

This page left intentionally blank

Table of Contents

1 Introduction

- 5 Who is Access Coaldale?
- 7 Accessibility Matters
- 8 Group Vision and Mission

2 Public Buildings

- 10 Gem of the West Museum
- 16 Coaldale Arena
- 28 Coaldale Pool
- 38 Coaldale Community Centre
- 46 Coaldale Curling Rink
- 55 Coaldale Public Library

3 Streets & Pathways

- 60 HWY 3 & HWY 845 Intersection
- 64 Main Street (20th Avenue)
- 68 Millenium Park Pathway

4 Handi-Ride Locations

- 71 Gem of the West Museum
- 73 Coaldale Library
- 73 Town Hall
- 74 Coaldale Sportsplex

Acknowledgements

On behalf of Access Coaldale, we would like to thank Barry McCallum, Principal of mc2 architecture ltd., for his guidance and knowledge contribution throughout the audit process. In addition, we would like to express our deepest gratitude to the volunteers who took the time to participate in the accessibility audit and learn about the importance of accessibility in our physical environment.

Who is Access Coaldale?

Access Coaldale is a citizen-led committee formed in late 2020, consisting of four (4) working group members that identify as living with a disability or caring for a person with a disability. The creation of the working group was in response to a citizen concern questioning the safety and accessibility of specific areas within the Town of Coaldale. The working group members all share the same interest in creating and promoting inclusivity while advocating for the rights of persons with disabilities.

Two (2) staff members from the Town of Coaldale continue to help facilitate Access Coaldale's meetings and offer any resources necessary to aid in the vision of achieving equitable space and opportunity within the community.

Access Coaldale Members

- » Janelle Fyfe
- » Christina Scott
- » Adrienne Shipton
- » Peter Stein

Town Staff

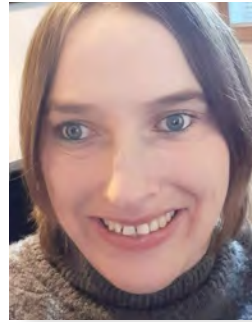
- » Spencer Croil, Director of Planning and Development
- » Melanie (Mel) Messier, Planner

Meet Access Coaldale's Members



Janelle Fyfe

Janelle is the proud mother of a teen living with Septo Optic Dysplasia. She believes in the importance of building resilient communities through the creation of spaces that encourage diversity, inclusion, and accessibility.



Christina Scott

Christina Scott is a proud Coaldale citizen and full-time wheelchair user. Christina cares deeply about accessibility and inclusion, acting as a strong advocate for disability rights.



Adrienne Shipton

Adrienne is a wife to a very supportive husband and a mom to five fantastic kids. She is a Multiple Sclerosis (MS) warrior and has been a resident of Coaldale for ten years.



Peter Stein

Peter uses a prosthetic and previously petitioned government for prosthetics for various people in need, including himself. He works full-time and enjoys his time off with friends.

*“Accessible design - is **good** design - it benefits people who don’t have disabilities as well as people who do.”*

- Steve Ballmer

Why does accessibility matter?

The fundamental reason why accessible design matters is that it gives persons living with a disability equal access to society. Accessible design, also known as universal design, means that we plan to build physical, learning and work environments so that they are usable by a wide range of people, regardless of their age, size, ability or disability (National Disability Authority).

What are barriers to equal access?

The Accessible Canada Act 2019 defines a barrier as anything physical, architectural, technological or attitudinal that hinders the full and equal participation in society of persons with an impairment, including a physical, mental, intellectual, cognitive, learning, communication or sensory impairment or a functional limitation (obstacle).

Access Coaldale wishes to eliminate barriers within our community to ensure that all citizens have the same opportunity to live the lives they want, thanks to barrier-free access. This will ensure full and equal participation, regardless of ability.

What is an accessibility audit?

An Accessibility Audit is an assessment of the built environment, which considers the day to day running of the building, access and safety in emergency situations, such as safety zones, routes, and signage. An accessibility audit of a building or an outdoor setting is the first step in an action plan for accessibility improvements. An audit serves as a useful starting point in assessing current accessibility and the overall usability of these spaces.



Vision and goals of Access Coaldale

In the Town of Coaldale, much of the growth over the past several decades has incorporated what building code requires in terms of accessibility measures, such as sidewalk ramps in the public realm and wheelchair ramps for some buildings. However, many areas of the community contain significant barriers for many groups, including people with disabilities, the young, the elderly, and their caregivers.

The work of Access Coaldale focuses on making more of making Coaldale accessible to all. In order to get there, an accessibility audit was conducted to determine how the community's spaces and places are performing. The vision and mission of the group represents where it would like to see the Town in the future years.

Vision - Coaldale will be a vibrant community where citizens of all abilities can live, work, and play.

Mission - To make Coaldale the most accessible community in Alberta.

Community Engagement

In the weeks leading up to the Accessibility Audit, the working group advertised the opportunity for community members to get involved with with the audit. This included public buildings, streets, playgrounds and parks.. A total of four (4) members of the community participated in the audit including two (2) community members at-large and two (2) employees from Jennie Emery Elementary School.

Audit Process

Initially, the working group developed a series of accessibility audit checklists to be utilized by members and the community to conduct the audit. Given the in-depth nature of an accessibility audit, the group sought out the services of accessibility consultant, mc2 architecture ltd., to lead the audits along with the working group and community members.

The full accessibility audit included a review of the following public buildings and outdoor spaces:

- » The Gem of the West Museum
- » The Coaldale Arena
- » The Coaldale Pool
- » The Coaldale Community Centre
- » The Coaldale Curling Rink
- » The Coaldale Public Library
- » 20th Avenue (Main Street)
- » HWY 845 and HWY 3 Intersection
- » Millenium Park Pathway
- » Handi-Ride drop-off and pick-up

The Gem of the West Museum



Parking

The number of barrier-free parking stalls at the Gem of the West Museum is adequate and meets the Land Use Bylaw requirements. However, the parking stalls could benefit from vertically mounted barrier free signs to ensure the accessible stalls are visible during the winter months.

Recommendations:

- » Install vertically mounted barrier free signage at existing stalls as per building code



North Entrance

Given the north entrance is the only accessible entrance to the building, it is recommended that it be indicated as such by signage that is visible from the east entrance to the parking lot. Following entering the building, it was determined that the ramp leading into the building was over the suggested 1 in 12 running slope; the length of the ramp exceeded the 9 m maximum length without a landing. There was no level area at the bottom of the ramp at the exit door.

Recommendations:

- » Provide signage perpendicular to the building face indicating the accessible entrance
- » Provide a landing at the base or middle of the ramp in conformance with the building code





Main Entrance

The entryway of the Gem of the West Museum is not accessible, and due to the Museum's heritage status would be difficult to alter or adapt. As there is an alternative barrier free access located on the east side of the building near the barrier-free parking stalls, there are minimal recommendations for the main entrance.

Recommendations:

- » Provide a power-operated door to allow easier access for persons using a cane or persons with low mobility to have easier access given the current weight of the door
- » Provide a warning strip at the top of the stairs opposite to the main entrance as the current location of the stairs is dangerous for persons of all abilities



Accessible Washrooms

There are public washrooms located on the upper and lower levels of the building. Attempts have been made to make the universal washroom and Men's and Women's washrooms on both levels more accessible to persons with disabilities. However, there are additional improvements that can be made.

Recommendations:

- » To avoid waste bins in the barrier free path of travel, consider installing a circular hole in the counter and locate waste bin beneath the counter
- » Reinstall mirrors beginning at the base of the counter to ensure persons with disabilities are able to view themselves or consider mirrors mounted on an angle
- » The upper-level washroom would benefit from space beneath the sink to allow for persons using wheelchairs in a frontal approach to the sink

Exhibits and Displays

There are a number of exhibits and displays within the museum that are positioned at different heights.

Recommendations:

- » Display exhibit items in a lowered exhibit case to ensure items are at an eye-level view for persons in wheelchairs and young children
- » Labels and description tags on upper shelves should be semi-vertical so they can be read by persons in a wheelchair



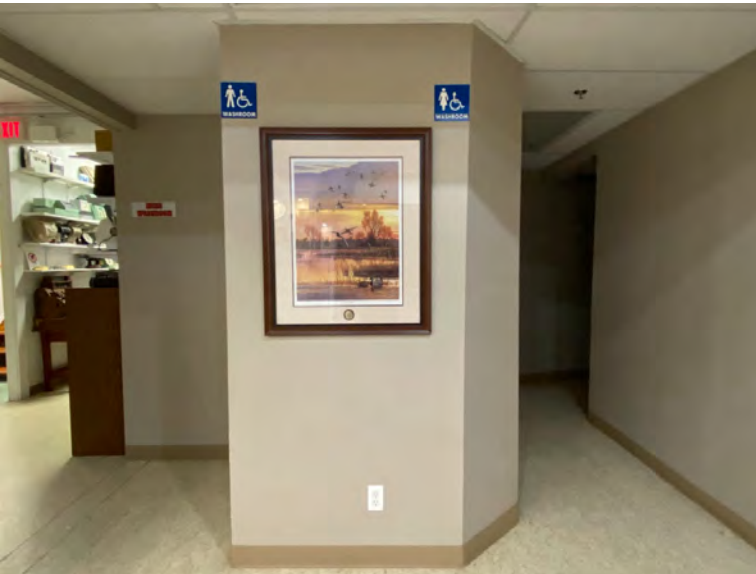
Floor Transitions

On the lower floor there are numerous locations where the floor surface has transitions which can pose a tripping hazard or be difficult to negotiate in a wheelchair

Recommendations:

- » Provide sloped smooth transitions (concrete topping or metal) where possible. Or highlight edges with highly contrasting colour to identify the danger
- » Alternatively, consider levelling the floor with low profile raised floor systems over larger areas. These systems can also carry electrical and communication cables for displays





Signage

A variety of accessibility signage throughout the museum is located above the suggested accessible height and could be relocated to be at a comfortable eye level for able bodied persons and persons with disabilities.

Recommendations:

- » Relocate signage to a 2000 mm maximum height (signs should be large enough and just above the average ambulatory head level so they can be viewed easily)



Elevator

The building is equipped with an elevator which provides accessible access to all three levels of the museum.

Recommendations:

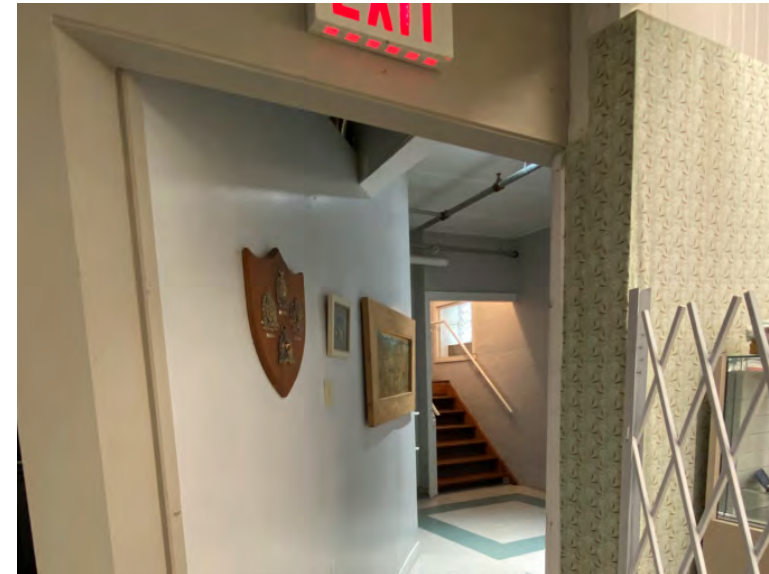
- » None

Lower Floor Emergency Exits

Following a review of the lower floor it was determined there are two emergency exits from the building and neither are accessible. The only accessible exit from the basement is the elevator.

Recommendations:

- » Persons with accessibility issues will require assistance in exiting. Ensure staff are trained to look for persons requiring assistance before exiting or provide a safe refuge area while waiting for emergency personnel to arrive



The Coaldale Arena

Parking and Main Entrance

The number of barrier-free parking stalls at the Coaldale Arena are considered adequate for the facility. The main entrance has a ramp equipped with guard rails and is at a comfortable slope for those using a wheelchair. The main entrance is power operated and push buttons are located at an accessible height.

Recommendations:

- » Consider installing a curb or lower rail within 75mm from the concrete edge, so that wheelchair wheels do not roll off the edge of the ramp





Secondary Entrance/Exit

The secondary entrance is primarily used as an exit for hockey players and game attendees following ice-related events. The doors are not power operated and are quite heavy for an able-bodied individual to open.

Recommendations:

- » Install power operated doors for easier entry and exit from the building



Concession Stand

The concession standards are at an adequate height for accessibility. However, the counter does not allow knee space for a person in a wheelchair.

Recommendations:

- » Extend the countertop space in a serving location to allow a frontal approach to the counter for persons in a wheelchair. It is recommended that the serving location identifies to be wheelchair accessible with signage

Foyer Washrooms

Two public washrooms are located at the entrance of the facility. Washroom doors are not power operated and the required 300mm clearance on the push side of the door. When it swings away from the user and 600 mm clearance on the pull side when the door swings towards the person to allow access for persons with disabilities.

Within the men's and women's washrooms, accessible washroom stalls are an acceptable size. Observations include that the men's washrooms do not have grab bars near the urinals, the washroom mirrors are not at an accessible height, and the garbage can potentially obstruct the door opening for a person in a wheelchair.

Recommendations:

- » Installation of power operated doors or ensure door operators have low resistance as per code (this is a convenience and ease of access item)
- » Relocation of garbage bin beneath sink
- » Installation of grab bars adjacent to men's urinals
- » Relocation of mirror to base of sink or install angled mirrors
- » Toilets without tanks require a grab bar at the rear of the seat to facilitate a transfer and also require a backrest or toilet seat cover
- » Consider the addition of a family/gender neutral washroom in all public facilities



Foyer Washrooms Photos (Continued)



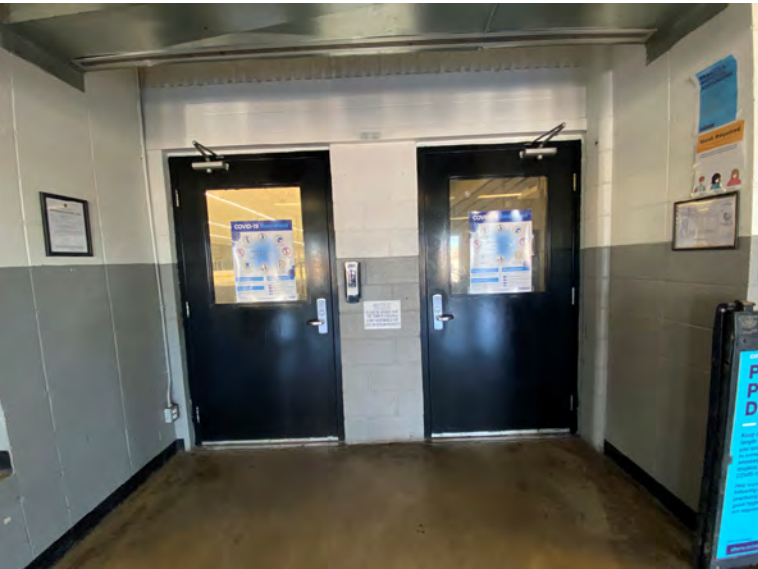
Viewing Area

Within the arena foyer, a viewing area is accessible by ramp, which is a comfortable slope for an individual using a wheelchair. Currently, there are no designated spaces for a person in a wheelchair in the viewing area.

Recommendations:

- » Install decals on windows to identify reserve space(s) for person(s) with disabilities
- » Ensure decals are positioned as to not obstruct the view of the individual
- » Ideally; mark both the bottom and top of ramp with colour contrasting strips to assist persons with low vision identifying a transition stage
- » Alternatively install rubber floor covering with low profile transition strips at the top and bottom. This will help the slip resistance on the ramp in case of water



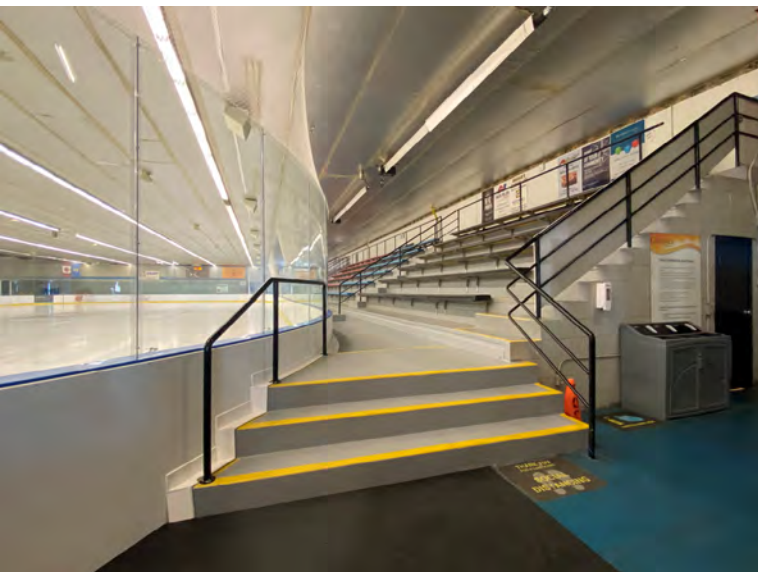


Rink Entrance

The entrance to the rink area is not power operated, posing a barrier for persons with limited mobility.

Recommendations:

- » Install power operated doors for ease of entry and exit from the rink



Spectator Stands

Currently, spectator stands are only accessible by stairs, which provides no space for a person using a wheelchair or one with limited mobility. During recent improvements, the boards surrounding the ice rink were lowered while the ice was raised making it easier to view the area from ground level. However, designating an accessible space near to the spectator stands would be the best option for inclusion.

Recommendations:

- » Designate a viewing space on the ground level for persons with limited mobility or using a wheelchair
- » Ideally, a short ramp and raised platform would provide better visibility over the boards

Figure Skating Changerooms and Washrooms

The door leading to the figure skating changing rooms is not power operated. In addition, there is a slight slope leading downwards to the change rooms. The washrooms located near to the change rooms do not have stalls of an adequate size to facilitate a person in a wheelchair.

Recommendations:

- » Install power operated door (if necessary). This will allow persons carrying bags and anyone with a mobility impairment assisting the skaters access
- » The new team locker rooms on the other side of the ice surface have been designed to be accessible. It is assumed these would be used for anyone using the ice surface that has a mobility impairment
- » If these locker rooms are to become accessible a further review would be required to evaluate the costs and practicality of upgrading these locker rooms and washrooms

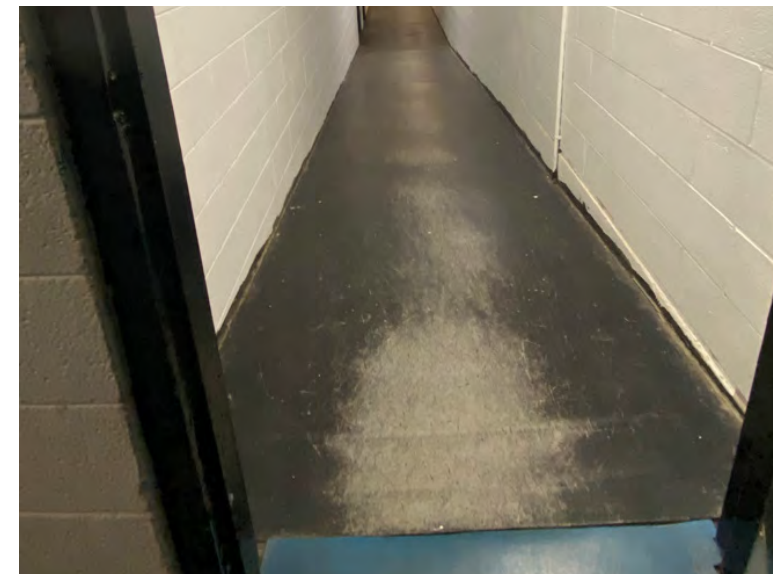


Figure Skating Photos (Continued)



Copperheads Changerooms

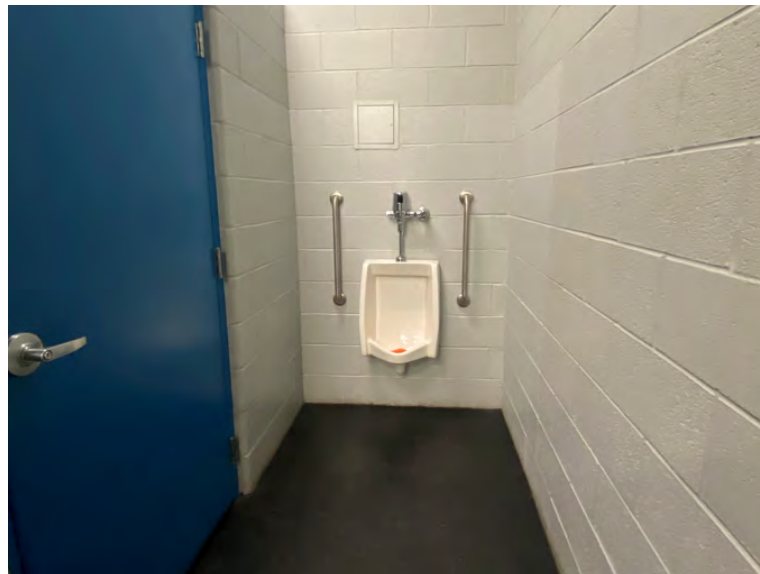
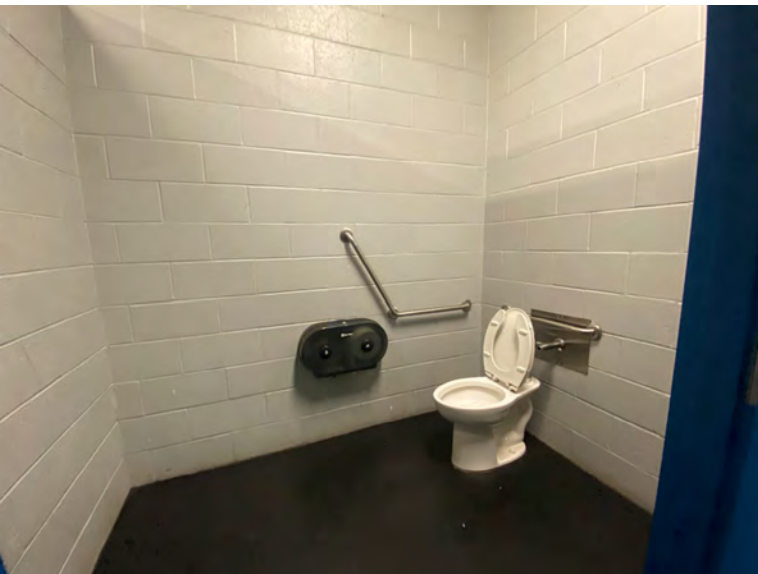
The Copperheads change rooms are located on the east side of the facility. The route leading up to the change rooms is accessible. The change rooms, bathrooms and showers are accessible and minimal improvements are recommended.

Recommendations:

- » Install auto operator on door between ice area and locker rooms as there is insufficient clearance on the locker room side of the door. This will also assist players with sticks and bags moving through the doorway



Copperheads Changerooms Photos (Continued)



Ice Access

The sheet of ice is accessible as it is almost level with a minimal drop.

Recommendations:

- » Ideally a moveable aluminum threshold can be used if a wheelchair bound person is going to join skaters on the ice surface. This was proposed for Nicholas Sheran Ice Arena where a student in a wheelchair could join her classmates from the nearby school



Emergency Exits

Within the arena there are various emergency exits throughout the building. One example is the east facing exit that has a concrete pad at the exterior exit that requires a person to step down to safely exit.

Recommendations:

- » If a wheelchair bound person needs to use this exit they will require a hard level pathway to move away from the building and clear the exit



The Coaldale Pool

The Pool is one of the older and least accessible facilities in Coaldale. There are complex issues that need to be addressed to make it more accessible. Solving one issue may not improve accessibility if there are many others not upgraded/modified.

Note: It is recommended that before making upgrades an accessibility consultant should be engaged to develop a number of options to review alternate solutions, costs and the viability of making changes.



Parking

The number of barrier-free parking stalls at the Coaldale Pool are considered adequate for the facility. There is also a smooth transition from the parking lot to the main entrance with a minimal slope. Signage is vertically mounted allowing for high visibility and an unloading area is located on the east side of the parking stall.

Recommendations:

- » None



Main Entrance

The main entrance of the Coaldale Pool is not power operated making it non-accessible to users. As this is the only entrance to access the facility, it is recommended that a power-operated door be installed.

Recommendations:

- » Provide a power-operated door for ease of access for persons with disabilities





Service Counter

A service counter is located in the hallway directly beyond the entrance doors. The hallway has a minimal width for multiple people to manoeuvre and the counter is located between access to the female and male change rooms

Recommendations:

- » With limited space to check-in consider moving the counter back (towards the pool to create a recessed area to allow users at the desk to complete their transaction without interfering with people entering/exiting the change rooms/hallway)
- » Lower one 915 mm wide section for children and wheelchair users

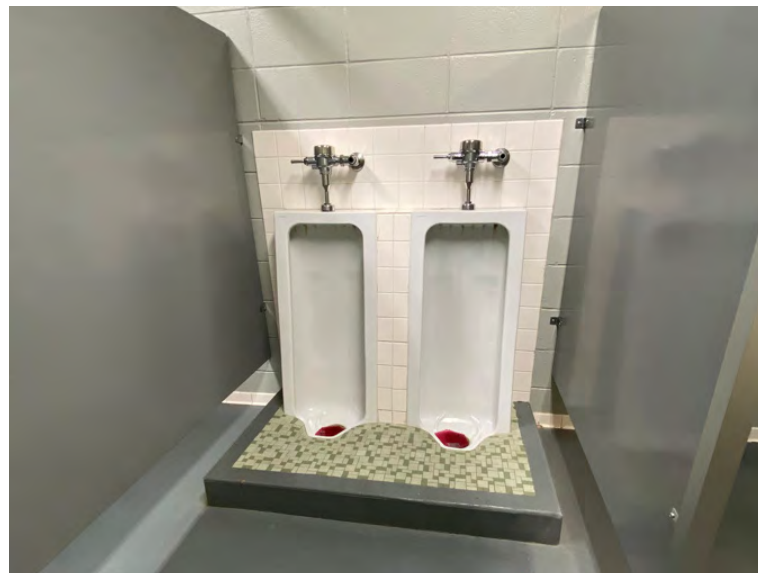
Washrooms

Two public washrooms are located at the entrance of the facility. Washroom doors are not power operated. Operators need to be low force to allow access for persons with disabilities.

Within the men's washrooms, urinals are elevated and are therefore inaccessible. Sinks in both washrooms would benefit from lowering the mirror and towel dispensers to be accessible for persons with disabilities as well as young children.

Recommendations:

- » Lower paper towel dispenser
- » Lower or angle mirrors in both men's and women's bathrooms
- » Install power operated doors
- » Replace urinals with wall mounted urinals and install grab bars for at least one urinal





Changeroom Entrance

The entrance of both changerooms do not meet the minimum barrier free path of travel requirements. Entrances with an L- configuration requires a minimum depth of 1200 mm to allow a wheelchair to turn the corner with ease.

Recommendations:

- » Given the change room washrooms may be too expensive to modify it may be more practical to create a separate universal accessible changeroom(s) to accommodate persons with disabilities
- » If change rooms are modified to be accessible; relocate concrete block partitions at entrance and redesign lockers and benches to allow 1200 mm wide access
- » Create a locker and bench area or private stall to accommodate wheelchair user and attendant



Changeroom Washrooms

The men's changeroom washrooms have urinals that are not accessible as they are elevated and do not have grab bars. There is inadequate space for wheelchairs to access the washroom adjacent to the urinals. That being said the washrooms located within the changerooms are non-accessible as they do not have a minimum 1500 mm turning radius for a person in a wheel chair to use the washroom.

Renovate washrooms to make them accessible with:

- » Accessible urinals
- » At least one accessible toilet stall
- » Lowered mirrors above accessible vanities (sinks)
- » An accessible shower stall



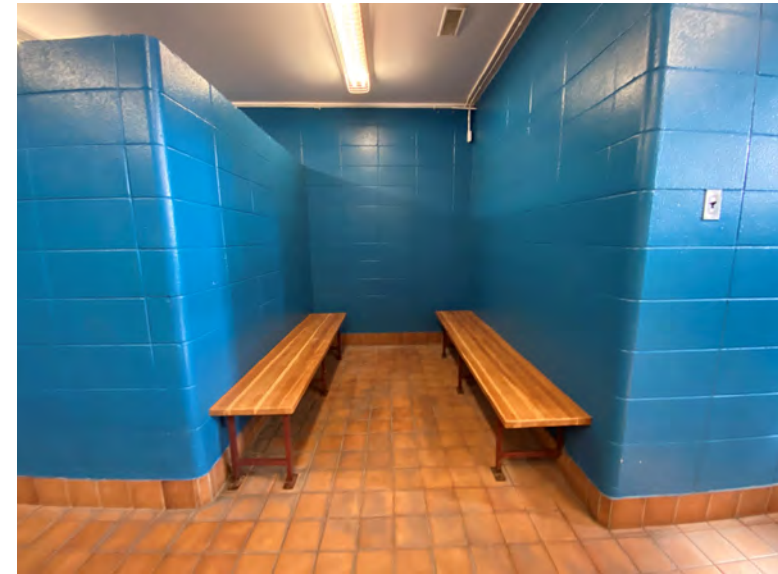


Accessible Change Tables

Currently, there are no spaces for an adult change table for persons with disabilities. The changeroom stalls do not have the adequate minimum 1500 mm turning radius for a person in a wheelchair to move within the space.

Recommendations:

- » Convert existing gym/office space into change room(s) for persons with disabilities
- » Install new partitions and doors to create accessible washrooms and changerooms
- » Install accessible sink, toilet, and shower (note design room as a wet washroom)
- » Ensure adequate space to manoeuvre a wheelchair and for an attendant to assist the person with disabilities
- » Install track mounted lift to transfer persons from a wheelchair to the change table, shower, sink, and toilet
- » Install adjustable height change table (preferred)
- » Install exterior door to access pool deck



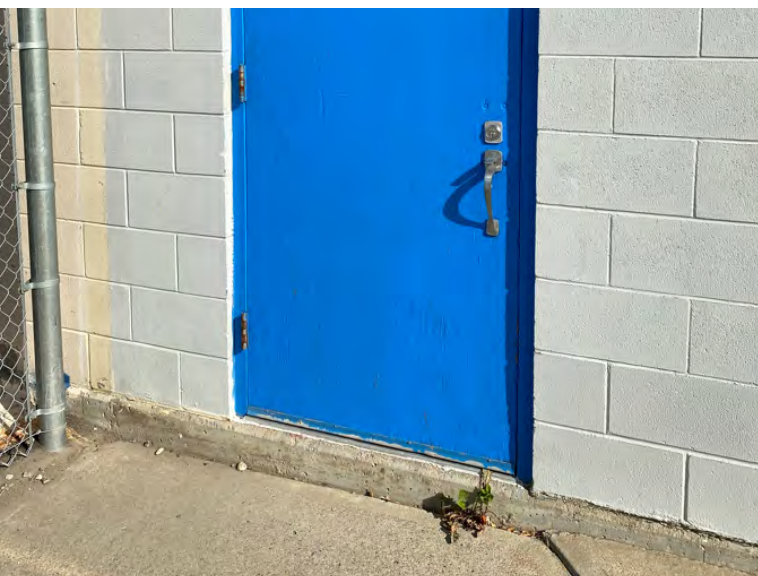


Emergency Exit(s)

Two emergency exits are located at the Coaldale Pool. Neither exit provides an accessible path of travel as the exit located in the hallway is not power operated and requires a significant push to exit. Additionally, the exit is elevated and requires an individual to step down to gain access outdoors. The secondary exit does not have a power operated door and requires a significant push to exit the building. Additionally, there is a staircase behind the exit making it unsafe for a person in a wheelchair as there is a potential to roll back towards the staircase.

Recommendations:

- » Provide an accessible emergency exit.
- » Exit door at the end of the hallway drops 100mm to grade. Install a raised concrete landing with ramp down to allow a person in a wheelchair to exit to the exterior unaided. (Note: this door exits onto the pool deck area and there is a security fence blocking exiting to the parking area. However it is assumed this is opened in an emergency)
- » The exit sign directs people to exit into the stairwell then out. If exiting into the stairwell, care must be taken as the landing is open to a staircase leading to the basement. Since the landing is 1500mm wide, it complies with code requirements for an accessible landing. However, the stairs present a potential hazard when multiple persons are trying to exit, especially if a wheelchair user's wheel were to go over the edge.
- » The top edge of the staircase should be finished with a brightly coloured warning strip to warn all users of the drop



Pool Access

Currently, there is no option for a person with limited mobility to enter or exit the pool without assistance.

Recommendations:

- » Provide a chair lift for persons with limited mobility at the shallow end of the pool
- » Ensure there is a continuous barrier free pathway from the accessible changeroom(s)



Pool Deck & Sitting Areas

The pool deck is large and appears to be smooth and in good condition. There are grass, shaded areas and picnic tables for persons to rest while not swimming or for caregiver/spectators.

Recommendations:

- » Where there are picnic tables ensure that the tables can accommodate a person in a wheelchair in each of the locations
- » Ensure there is a continuous barrier-free path to each accessible table location

The Coaldale Community Centre



Main Entrance

All entrances to the Community Centre are at-grade and considered accessible.

Recommendations:

- » None



Curling Rink Interior Access

A stairwell acts as direct access from the Community Centre to the Curling Rink. However, the stairwell does not allow access for persons using a wheelchair.

Recommendations:

- » Install an accessibility ramp on a portion of the existing staircase
- » This set of doors is a secondary entrance to the Curling Club. The external exit door of the curling club, adjacent to the entrance, is used as an accessible entrance (refer to Curling Club for information). A ramp in this location needs to be up to 9 m long which will impact circulation in the lobby





Foyer Entrance

The foyer entrance has existing wall-mounted coat racks, which has a lower space accessible to persons in a wheelchair. In addition, the doorway leading into the general area of the community centre is adequately sized and can be propped open to allow barrier-free access.

Recommendations:

- » None



General Space

The main room of the community centre is an open-space that can be configured to accommodate accessible use.

Recommendations:

- » None



Serving Counter

The serving counter is accessible for persons in a wheelchair and located at an ideal height.

Recommendations:

- » None





Kitchen

The kitchen is generally accessible for persons with a disability. However, access to sink fixtures can pose a challenge for persons in a wheelchair.

Recommendations:

- » The kitchen is not designed to be accessible but can accommodate individuals who are still ambulatory but may require assistive devices (canes, walkers) or the ability to rest (lean against the counter). It is not recommended that a person in a wheelchair work in the kitchen as it would impede others since the circulation area is limited and there are no counter surfaces with wheelchair high surfaces or clearances below
- » If there is a need for an accessible location within the kitchen then it is recommended that one bank of cabinets be modified



Hallways and Circulation

The path of travel leading towards the washrooms has adequate space for persons in a wheelchair to pass through while accommodating additional traffic in the opposing direction. The drinking fountain is located at an acceptable height for persons in a wheelchair and far enough removed from the path of travel leading to the washrooms.

Recommendations:

- » While there are accessible washrooms in the Community Centre, the facility would benefit from a universal (gender-neutral) washroom to benefit those requiring caregiver assistance who may be of the opposite sex. This would require a redesign of the washroom areas and would require a detailed review to confirm whether this is feasible

Washrooms

Currently, there is a lack of space to allow a person in a wheelchair to comfortably manoeuvre the washroom entry.

Recommendations:

- » Clearances to the door pull within the washroom do not meet code requirements
- » Install a power-operated door to allow for ease of entry and exit



Accessible Stalls

The washrooms are equipped with accessible stalls that are an adequate size to accommodate wheelchair users. However, the grab bars are positioned below the toilet paper dispenser making it a challenge to use.

Recommendations:

- » Install a vertical grab bar or reposition the existing grab bar
- » Grab bars require a vertical component to allow the user to pull themselves up from a seated position or to stabilize themselves while lowering to the seat





Men's Urinal

Within the men's washroom, there is an existing grab-bar located next to a selected urinal.

Recommendations:

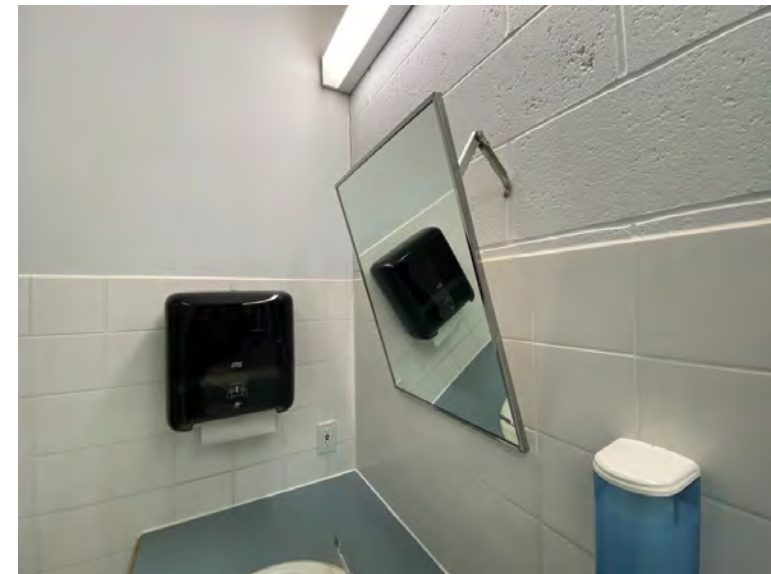
- » While there is an existing grab bar, it is best practice to mount a grab bar on each side of the urinal to allow the user to use the left or right hand for support
- » Since the washrooms are used by users of all ages at least one urinal should be lower for children

Washroom Sinks

Washroom sinks would benefit from accessible sink fixtures, relocating hand soap dispensers, lowering mirrors and raising the lower portion of the counter to allow clearance for wheelchair users. In addition, baby change table(s) should be installed. Preferably in both washrooms or in the universal washroom if one is implemented.

Recommendations:

- » Install accessible sink fixtures
- » Relocate soap dispensers so at least one near the accessible sinks(s) location is reachable
- » While the mirrors can be tilted at the accessible sink location can be adjusted there is no means for a person in a wheelchair or with limited arm strength to adjust them. A permanent tilted mirror can be installed or more simply a larger mirror starting at the top of the backsplash aligned with the top of the mirrors can be used by everyone
- » Raise the lower portion of counters at accessible sink(s) location



The Coaldale Curling Rink



Main Entrance

A ramp is located at the main entrance of the Curling Rink. However, the main entrance is inaccessible for persons in a wheelchair as the doorway threshold is higher than the surface of the ramp. In addition, the guard rail does not have the required 76mm high guard rail (or curb) to prevent a wheelchair wheel from falling off the ramp. Lastly, the vestibule leading to a secondary set of doors does not have adequate space for a wheelchair user to transition into the building.

Recommendations:

- » It is feasible to make the main entrance accessible by replacing the ramp and moving the interior vestibule doors further away from the exterior doors
- » Auto-operators or motion sensors would benefit all users. A conceptual drawing is required to determine the most suitable solution to accommodate persons with a disability or limited mobility



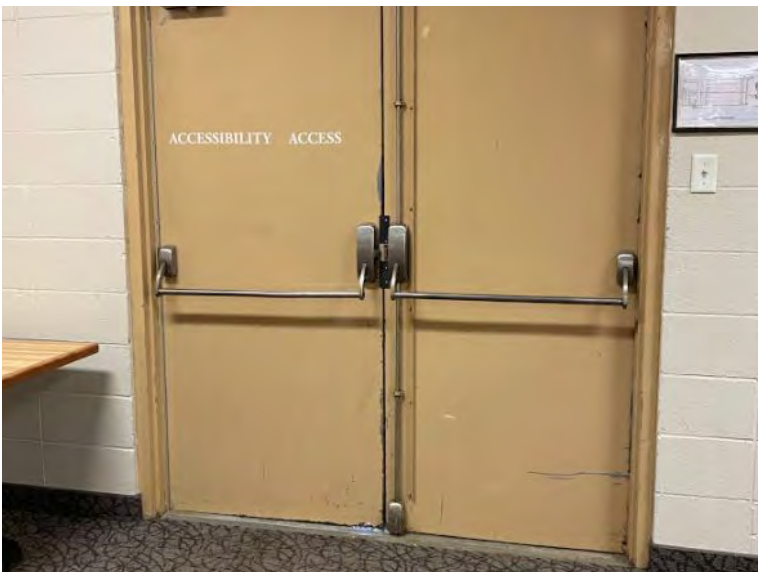


Rear Entrance

In response to the inaccessible main entrance, Town Staff has allocated the rear entrance as the primary accessible entrance with the use of signage. This is an interim solution for accessible access to the building.

Recommendations:

- » Maintain the rear entrance to be clear of obstructions while being used as the primary accessible entrance
- » The exterior pavement should be adjusted to be level at the door area as the parking lot is sloped
- » A ramp with railing would be beneficial to define the barrier-free path of travel



Viewing Areas

There are ideal viewing areas throughout the Curling Rink to accommodate wheelchair users.

Recommendations:

- » None

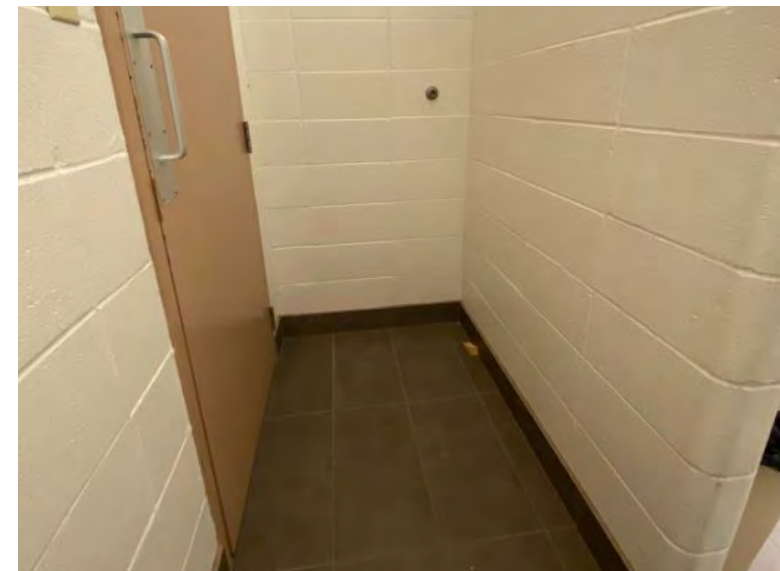


Washrooms

Access to washrooms poses a challenge for wheelchair users to comfortably manoeuvre. Persons using a scooter or a power-operated wheelchair may have increased difficulty if not an inability to access washrooms.

Recommendations:

- » Moving the interior block partition would improve access to the washrooms. This would also require changes to the vanities to accommodate the change
- » Another option would be to add a universal (gender neutral) washroom. A detailed review would be required to identify the feasibility and costs





Men's Urinal

The men's urinal would benefit from the installation of grab-bars.

Recommendations:

- » Installation of grab-bars on both sides of the urinal



Accessible Stalls

Accessible stalls are located in washrooms that are of adequate size. However, toilet roll holders are awkwardly placed making it difficult to access for persons with limited mobility. Ideally, the grab bars would also have a vertical component to allow users to lower themselves or assist in pulling themselves up.

Recommendations:

- » Relocate toilet roll holders to an accessible location near the existing grab bars

Washroom Sinks

Washroom sinks are located at an acceptable level with adequate clearance for wheelchair users.

Recommendations:

- » Lower mirror to an accessible height
- » If paper towel dispenser is hand operated, it should be lowered to allow for reach from a seated position



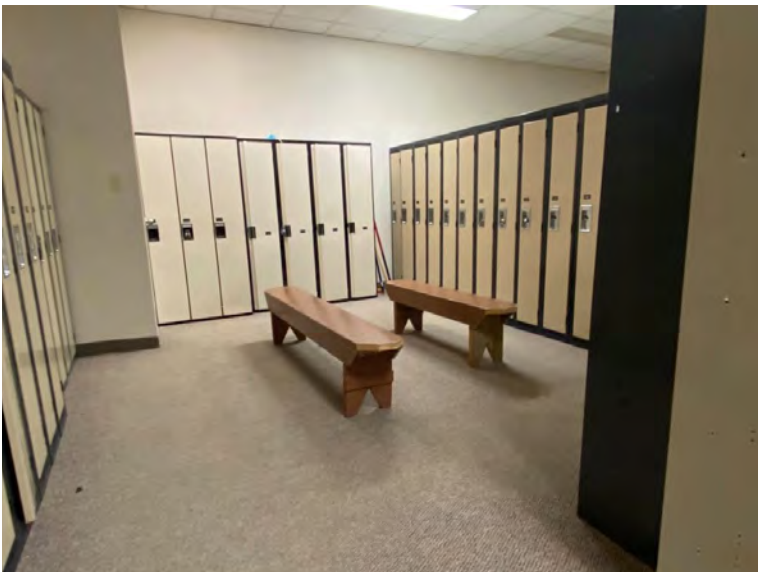


Locker Rooms

There is adequate space to travel through the locker room doorway.

Recommendations:

- » None

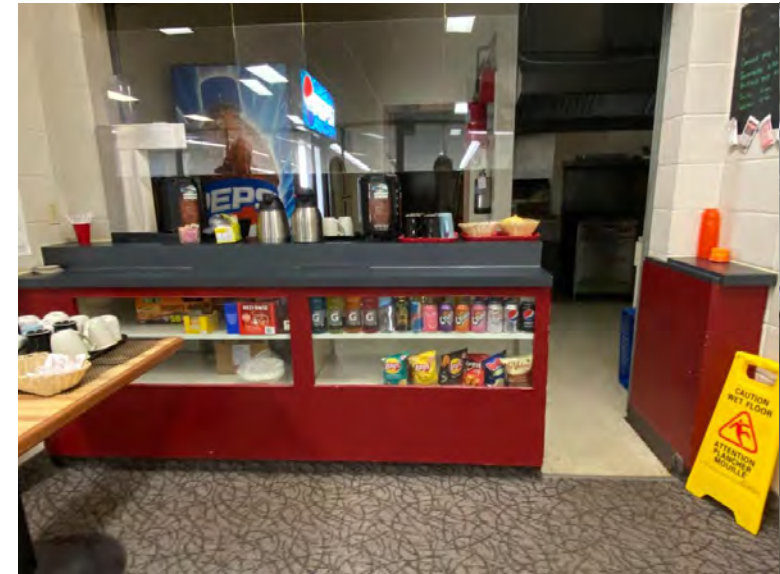


Serving Counters

The existing serving counters would benefit from a lowered space to serve wheelchair users.

Recommendations:

- » Provide a lowered section of the serving counters to serve wheelchair users





Interior Doorway

Within the Curling Rink there is an existing doorway between spaces with adequate clearance for wheelchair or scooter users to pass through. However, there is an existing convenience issue as it is easier for people to move through a wider opening.

Recommendations:

- » Review whether it is feasible to install a sliding glass door that meets fire exit requirements as this would allow for a full width opening when both spaces are used
- » The improvement may require alteration to the entire aluminum partition system in this location

Coaldale Public Library





Parking

The number of barrier-free parking stalls at the Coaldale Library meets the Current Land Use Bylaw requirements and the central drop curb is located in an appropriate location. The parking stall currently has one barrier-free parking sign (vertically mounted sign).

However, it is difficult to distinguish the location of parking stalls as the existing paint is significantly worn, which may lead to confusion on the appropriate space or orientation needed to park the vehicle.

Recommendations:

- » Re-paint parking stall lines to ensure appropriate barrier-free stall widths are identified
- » Paint a barrier-free path of travel adjacent to the barrier free stall and at the entry of the curb ramp for unloading purposes
- » Paint a barrier-free path of travel on the opposite adjacent side of the barrier free stall to ensure there is adequate space for individuals exiting from the right-hand side of a vehicle
- » Relocate the Barrier-Free stall to the left side of the curb-cut so the access aisle is on the right hand side of the vehicle and aligns with the curb cut

Main Entrance

The entryway of the Coaldale Public Library is on a level surface with a slight slope, which is manageable for persons using a cane or operating a wheelchair. The main entrance is power operated and push buttons are located at an appropriate height. There were no concerns with the main entrance of the building.

Recommendations:

- » None



Interior Circulation

The interior corridors and pathways in the library are generally wide enough for easy movement throughout the public spaces of the library.

Recommendations:

- » None





Service Counter

The Reception and Service counter did not include an accessible service counter at wheelchair height. In addition, there was no signage identifying an accessible counter nor did it have signage for an Assistive Listening System, which would be considered best practice.

Recommendations:

- » Provide an accessible counter space at wheelchair level for equitable access to services



Washrooms

The entrance to the bathroom was not considered accessible due to non-power operated doors and a manual double-door entrance making it unsafe for a less able-bodied individual to access the bathroom alone.

Recommendations:

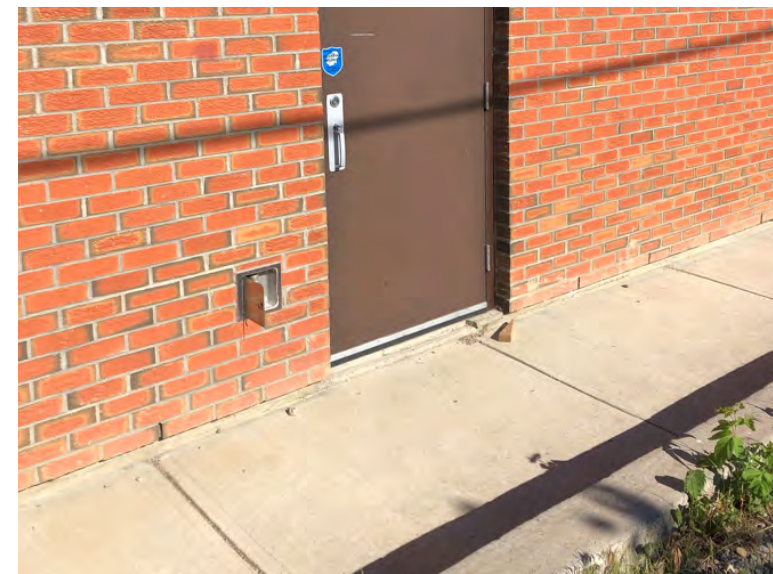
- » Automatic doors should be considered for both men's and women's washrooms. However because the entry vestibules are tight access will still be difficult
- » Should the bathrooms be renovated at some point in time, a relocation of both men's and women's bathroom doors should be considered to allow ample space for persons entering and exiting the washroom
- » A family/gender neutral washroom would be beneficial if the washrooms were redesigned to improve access

Emergency Exit

The library's emergency exit is located on a barrier free path of travel and poses no concerns. However the exit door has a 76 – 100mm drop to the concrete walkway outside. This will require a person in a wheelchair to need assistance when exiting in an emergency.

Recommendations:

- » Install a raised concrete landing on the exterior side of the door and slope down to grade install a ramp up at the end of the walkway to grade or redesign grades with future development of the Civic Square parking area



20th Avenue (Main Street)



Exterior Street

While using the Town's new sidewalk system the only comment was for the Post Office. They have used large gravel as part of the landscaping in front of the building. There is no guard to stop the gravel from spilling onto the walkway and gravel has spilled onto the walkway creating a tripping hazard.

As for the coloured concrete it is generally good and highlights the bulbed areas at the intersections with the plain concrete forming the path to the curb cuts. Surfaces are smooth with tight control joints and landscaping items, trash receptacles and benches do not interfere with a barrier free path of travel.

Recommendations:

- » Request the Post Office to replace the material with something more suitable or provide a curb guard such as pressure treated wood along the edge of the walkway higher than the gravel to prevent gravel from easily being kicked onto the walkway



Main Street (East) Intersection(s)

Along Main Street heading east, there are a variety of intersections with uneven surfaces making it difficult for persons with a disability to cross the street safely. Additionally, curbs are oriented in a way that directs persons into traffic as opposed to the pedestrian crossing.

Given that the infrastructure is older in this area, there are obstructions within the barrier free path of travel making it difficult for a person to navigate the sidewalk without having to move into the street.

Recommendations:

- » When construction is scheduled for street improvements, ensure crossings are oriented in a way that is safe for persons with disabilities
- » Widen the sidewalk in high pedestrian use areas and ensure there are no





Highway 3 and Highway 845 Intersection



Highway 3 and Highway 845

The sidewalk at Westland Insurance narrows to 1200mm in width with a steep side slope and asphalt topping creating an uneven surface.

Crossing Highway 3 and the railway tracks could be solved by installing an overhead pedestrian bridge similar to those found at the LRT systems in Calgary. However, it is recognized that the costs for such a bridge may be beyond available funding. In addition to get up and down the bridge creates its own accessibility issues and would require careful and extensive planning.

Recommendations:

- » Widen walkway to 1800 mm minimum (preferred 3000mm)
- » Install jersey barriers along the curb to protect pedestrians from the turning lane
- » Remove the abandoned driveway access and reduce the cross slope on the sidewalk

Where the sidewalk turns toward the intersection Island:

Recommendations:

- » Widen sidewalk (as above) and install a retaining wall along the landscaped edge
- » Continue jersey barriers to the curb cut to protect pedestrians from vehicles making the turn





Curb Cut South Side

Recommendations:

- » Modify curb cut so that the sidewalk has at least 1200mm behind it so that a wheelchair is approaching it directly
- » If there is sufficient space behind the curb cut location install a bench against or as part of the retaining wall system to allow users to wait for the light to change
- » Relocate the push button control from the island (if feasible) to this location since the island is very small
- » Repair the asphalt transition to create a smooth surface



South Island

Recommendations:

- » The island is narrow and there is limited room to turn in a wheelchair
- » Finish concrete closer to the pole base so that a wheelchair can get closer to the button or relocate the button as mentioned above
- » Consider cutting the island so a wheelchair does not have to go up then down (a level area at the top of a curb cut is preferred). If cut relocate the push button to a smaller pole closer to the curb cut

Highway Crosswalk

Recommendations:

- » Ensure the asphalt surface is smooth and free of holes and raised edges within the crosswalk area
- » Paint new crosswalk lines with zebra markings to increase the visibility of the walk area



North Highway Island

Recommendations:

- » This island is larger and the push button is reachable
- » Finish concrete or install asphalt to tidy up opening around the pole base
- » Consider relocating the push button to the road edge to allow users to safely cross the turning lane



Millenium Park Pathway



Surface

The pathway surface was generally in good condition and consistently level. The only area of concern included a section of the pathway that serves as a drainage ditch and may impact the path of travel during wet or cold temperatures.

Recommendations:

- » For future pathways, avoid using sections of the pathway for drainage



Benches

The pathway has well-placed furniture along the pathway. However, a space for wheelchair users is not available directly adjacent to existing seating.

Recommendations:

- » Provide a concrete space for wheelchair users to rest and enjoy the pathway directly next to the existing seating



Access to Community Garden

The community garden is located directly on the path of travel of the pathway. Unfortunately, the garden is not accessible for persons in a wheelchair or with limited mobility.

Recommendations:

- » Pave a pathway to or around the community garden to allow persons with limited mobility access to the garden



Coaldale Handi-Ride Locations



Introduction

During the initial facility review earlier this fall the availability of Handi-Ride service was not mentioned or discussed. It is extremely important that all forms of transportation be considered when reviewing accessibility since a lack of services or proper site access may preclude or limit use of these public facilities due to inconvenience or the ability to even get close enough to the main entrance and be connected to a barrier-free path of travel.

When discussing accessibility, a future public transit system may also be planned to ensure that pick-up and drop off locations are located on an accessible pathway from the residential neighborhoods to both commercial and public facilities. Considerations must be made not only at the bus-stop but also along the pathway leading to the main entrances of homes, commercial buildings and public facilities, including park and outdoor recreational areas.



Gem of the West Museum

There are two barrier-free parking stalls located just north of the accessible entrance. However, there is no indication that a stall or drop-off location has been designated for Handi-Bus service.

Recommendations:

- » Review the existing parking lot layout and repaint stall lines
- » Consider relocating one barrier-free stall adjacent to the building and creating a designated Handi-Ride stall in the open area adjacent to the concrete pad
- » Alternatively, if the overhead door to the Museum is not used during opening hours this could become the designated stall

Coaldale Public Library

The Library has angled parking stalls at the front entrance along with a barrier-free stall. Similar to the Gem of the West there is not a dedicated drop off location for the Handi-Ride service so if the Barrier-Free stall is in use the Handi-Ride would have to pull into the nearest vacant stall, which inconveniences the users if the parking area is full.

Recommendations:

- » Dedicate a specific barrier-free stall and access aisle for Handi-Ride services, or
- » Consider providing a shared Handi-Ride service location in the proposed Civic Square parking lot which could services both the new Town Hall and the Library. If this is done ensure the path of travel to both facility entrances are barrier-free



Town Hall

The existing Town Hall has parallel parking stalls on the street immediately adjacent to the ramp to enter the building. This is an ideal location for a barrier-free stall.

Recommendations:

- » Until the new Town Hall is constructed, consideration should be made to dedicate the parallel parking stalls on the street for both a barrier-free stall and Hand-Ride pick-up/drop-off location





Coaldale Sportsplex

The existing Ice Rink, Outdoor Swimming Pool, Community Centre and Curling Club are all located in one area. While there are barrier-free parking stalls identified at the Pool and Ice rink, no Handi-Ride drop off locations were clearly indicated.

Recommendations:

- » As the Ice Rink ramp is located a fair distance from the Pool and Community Centre entrances it may benefit from its own dedicated drop off location and Handi-Ride stall
- » It may be possible for the Pool and Community Centre to share a Handi-Ride drop off location, which could be a parallel stall on the west side of the pool parking area
- » In both cases the stalls should be clearly marked with access aisle and signage
- » It may be a consideration to redesign the complete parking lot and paint new stall and driveway lines to clearly identify vehicular movement, accessibility and service areas



